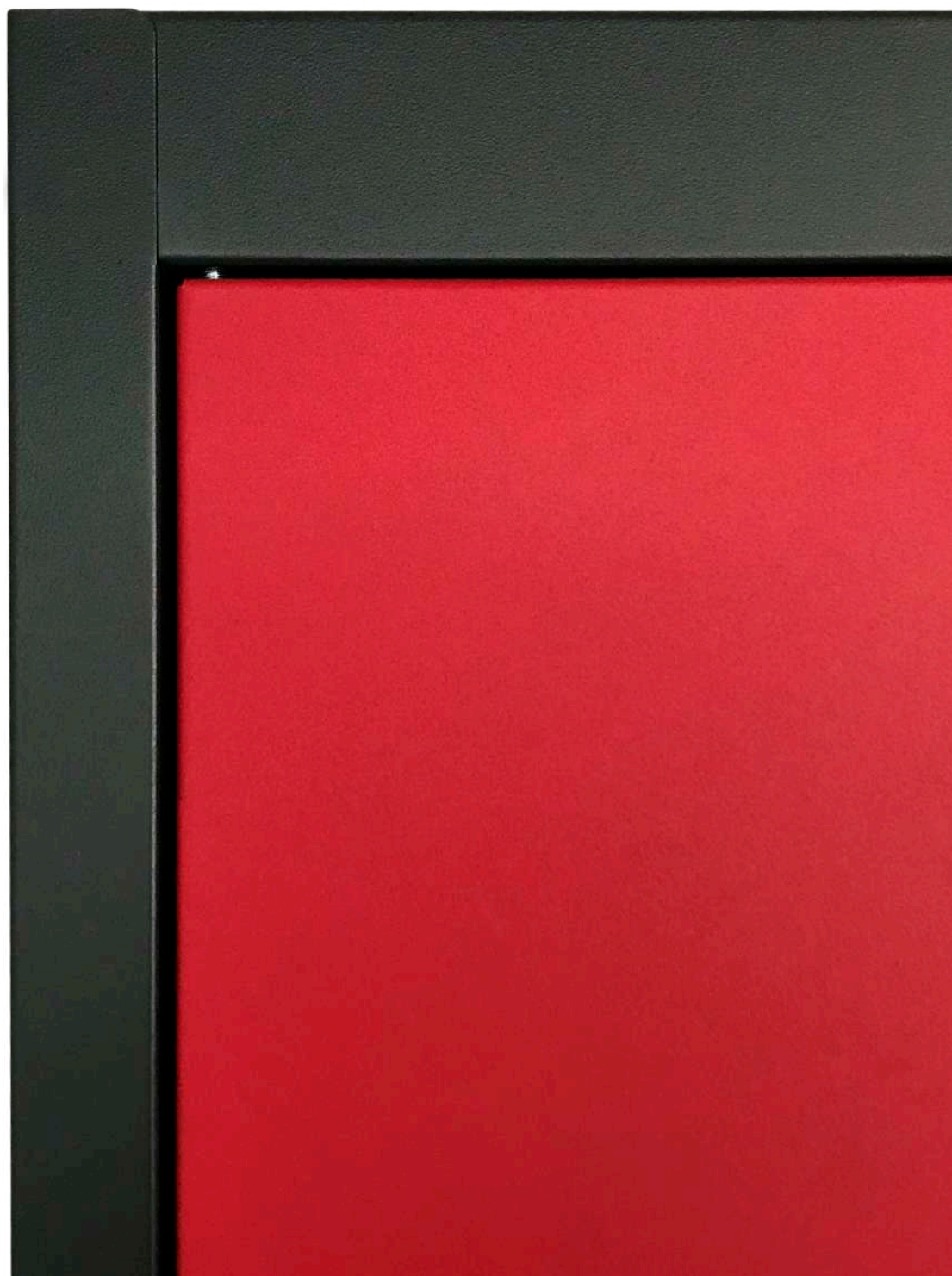




TECHNICAL DATA SHEET
OFFICE LOCKERS
OFFICE AND INDUSTRIAL CUPBOARD





ARM-05



ARM-08



ARM-01

CHARACTERISTICS

Welded Monoblok cabinet, made of cold laminated steel metal sheet, quality DC01, according to the European Norm EN 10130 with a carbon content with a carbon content of less than 0,12%.

Metal thickness of 0.8 mm. Point welding process.

Previous treatment of passivating and degreasing with amorph bonderizing before performing the painting process.

Dried in a polimerization oven at 180°C during 15 minutes.

Painting with Epoxy-polyester powder in robotized cabins.

Body and doors painted in grey RAL 7035 Micro-textured finish. Minimum thickness of the painting: 50 microns.

3-Point lock with 2 keys per lock. Recessed handle.

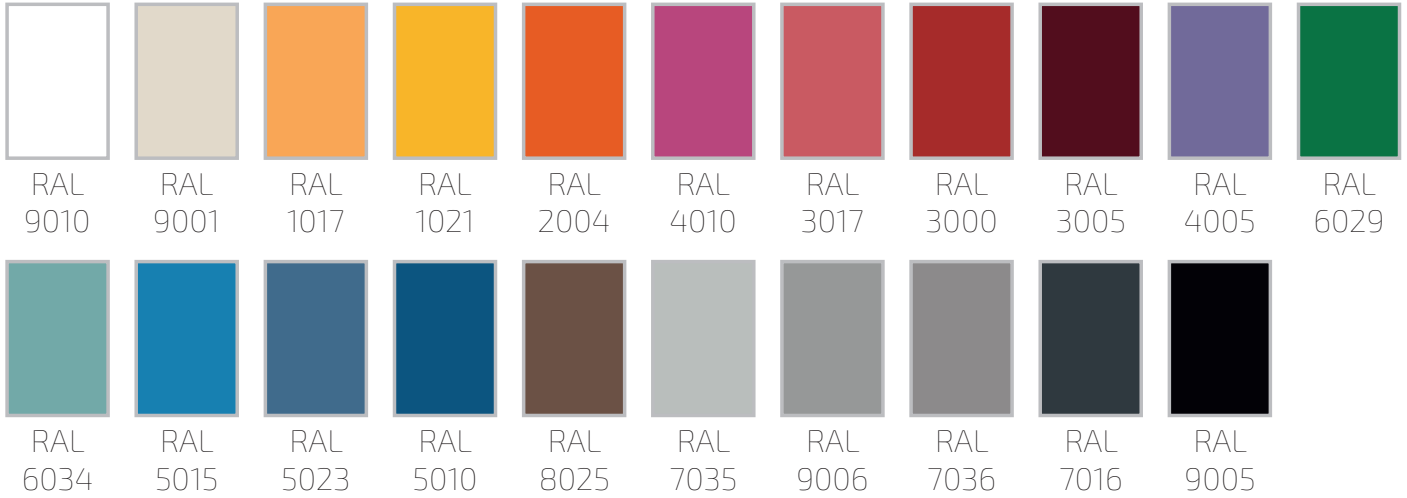
Shelves with guides for hanging files.

Shelves included. Aluminium coat rods (in models ARM03, ARM04, ARM06, ARM08 y ARM09).



For further information, please, do not hesitate to contact us by phone +34 976 50 54 88, or to have a look at our homepage: www.megablok.com

COLOURS



OPTIONS



Additional sheets



Disassembled

INOX

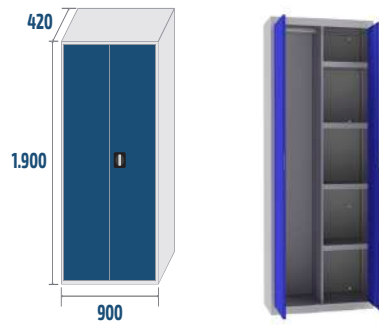
Stainless steel



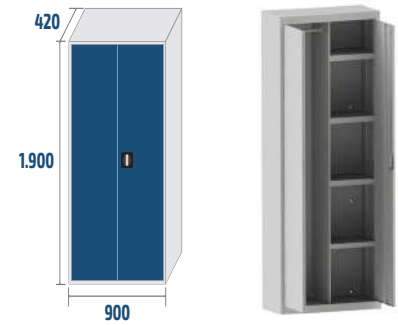
COMBINATIONS AND DIMENSIONS



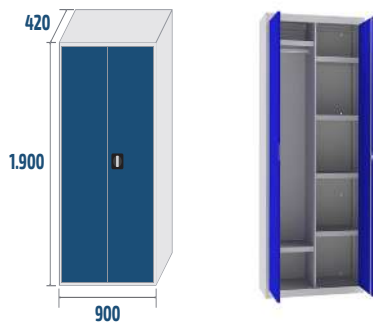
ARM01
 COD: 19001
 4 big shelves



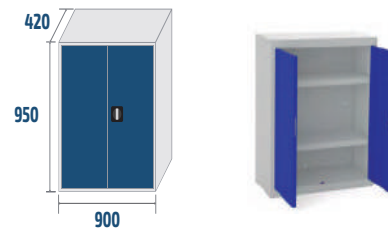
ARM02
 COD: 19002
 Big partition
 + 4 half shelves



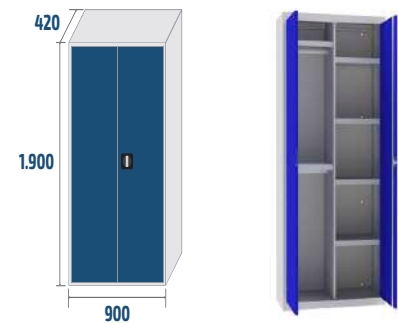
ARM03
 COD: 19003
 Big partition
 + 4 half shelves
 + 1 coat rod



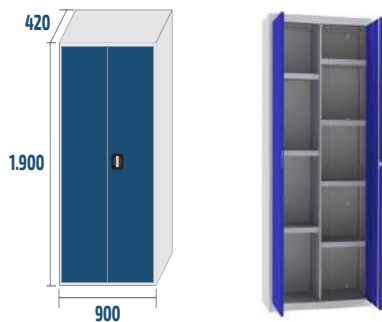
ARM04
 COD: 19004
 Big partition
 + 6 half shelves
 + 1 coat rod



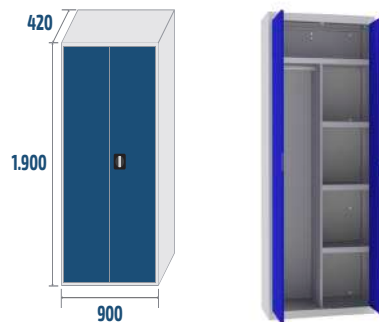
ARM05
 COD: 90001
 2 big shelves



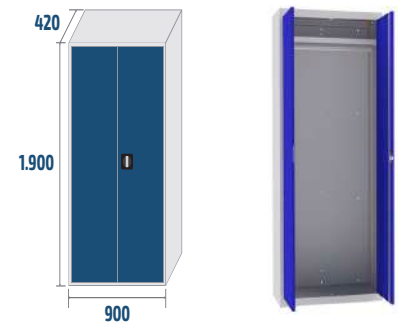
ARM06
 COD: 19006
 Big partition
 + 6 half shelves
 + 2 coat rod



ARM07
 COD: 19007
 Big partition
 + 7 half shelves



ARM08
 COD: 19008
 Big partition
 + 1 Big shelf
 + 3 half shelves
 + 1 coat rod



ARM09
 COD: 19009
 Big shelf
 + 1 coat rod

COMBINATIONS AND DIMENSIONS

INTERIOR MEASUREMENTS (mm)

MODEL	900		
	HEIGHT	WIDTH	DEPTH
ARM01	1.800	795	366
ARM02	1.800	390	366
ARM03	1.800	390	366
ARM04	1.800	390	366
ARM05	850	795	366
ARM06	1.800	390	366
ARM07	1.800	390	366
ARM08	1.800 (1544-220)	390	366
ARM09	1.800 (1544-220)	795	366